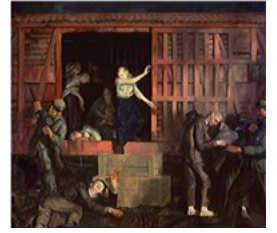


Art Bridges

Crystal Bridges Museum of American Art 2

1. Artist: George Wesley Bellows, 1882 - 1925
Return of the Useless, 1918
59 × 66 in. (149.9 × 167.6 cm)
Crystal Bridges Museum of American Art, Bentonville, Arkansas
CL.2022.3.16
2009.6



2. Artist: Grant Wood, 1891 - 1942
The American Golfer, 1940
Oil on canvas
36 1/2 × 48 in. (92.7 × 121.9 cm)
Crystal Bridges Museum of American Art, Bentonville, Arkansas
CL.2022.3.17
2014.33



3. Artist: Thomas Waterman Wood, 1823 - 1903
Not an Egg, 1887
Oil on canvas
30 × 20 in. (76.2 × 50.8 cm)
Crystal Bridges Museum of American Art, Bentonville, Arkansas
CL.2022.3.18
2010.76



4. Artist: Ammi Phillips, 1788 - 1865
Woman in Black Ruffled Dress, 1865
Oil on canvas
32 × 27 in. (81.3 × 68.6 cm)
Crystal Bridges Museum of American Art, Bentonville, Arkansas
CL.2022.3.19
2012.23



5. Artist: Thomas Moran, 1837 - 1926
Valley of the Catawissa in Autumn, ca. 1862
Oil on canvas
39 3/4 × 63 1/2 in. (101 × 161.3 cm)
Crystal Bridges Museum of American Art, Bentonville, Arkansas
CL.2022.3.20
2005.6



6. Artist: Richard Estes, born 1932
Acadia Park I, 2006
Oil on board
21 1/2 × 37 1/8 in. (54.6 × 94.3 cm)
Courtesy Crystal Bridges Museum of American Art, Bentonville, Arkansas
CL.2022.3.21
2007.19

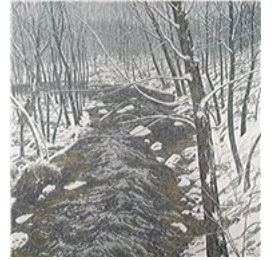


Crystal Bridges Museum of American Art 2

- 7.** Artist: Bo Bartlett, born 1955
The Lobster Wars, 2007
Oil on linen
80 × 112 in. (203.2 × 284.5 cm)
Crystal Bridges Museum of American Art, Bentonville, Arkansas
CL.2022.3.22
2007.193



- 8.** Artist: Neil G. Welliver, 1929 - 2005
Snow on Alden Brook, 1983
Oil on canvas
Crystal Bridges Museum of American Art, Bentonville, Arkansas
CL.2022.3.23
2008.8



- 9.** Artist: John Baldessari, 1931 - 2020
Beethoven's Trumpet (with Ear) Opus #132, 2007
Foam, resin, aluminum, cold bronze, and electronics
73 × 105 × 72 in. (185.4 × 266.7 × 182.9 cm)
Crystal Bridges Museum of American Art, Bentonville, Arkansas
CL.2022.3.24
2010.6



- 10.** Artist: Andy Warhol, 1928 - 1987
Hammer and Sickle, 1977
Acrylic and screen print on canvas
76 × 86 in. (193 × 218.4 cm)
Crystal Bridges Museum of American Art, Bentonville, Arkansas
CL.2022.3.25
2012.495



- 11.** Artist: Neil G. Welliver, 1929 - 2005
Frozen Spring, 1974
Oil on canvas
96 × 96 in. (243.8 × 243.8 cm)
Crystal Bridges Museum of American Art, Bentonville, Arkansas, Gift of Ruth and Stanley Westreich
CL.2022.3.26
2021.13

- 12.** Artist: Neil G. Welliver, 1929 - 2005
Autumn Blueberry Barren, 1982
Oil on canvas
96 × 96 in. (243.8 × 243.8 cm)
Crystal Bridges Museum of American Art, Bentonville, Arkansas, Gift of Ruth and Stanley Westreich
CL.2022.3.27
2021.14
-

Crystal Bridges Museum of American Art 2

- 13.** Artist: Luke Butler, born 1971
The End XIV, 2013
Acrylic on canvas
42 × 60 × 2 in. (106.7 × 152.4 × 5.1 cm)
Courtesy Crystal Bridges Museum of American Art, Bentonville, Arkansas
CL.2022.3.28
GAE.2015.41



- 14.** Artist: Susie J. Lee, born 1972
Jake, 2013
High-definition video portrait
50 × 34 × 4 in. (127 × 86.4 × 10.2 cm)
Courtesy Crystal Bridges Museum of American Art, Bentonville, Arkansas
CL.2022.3.29
GAE.2014.97



- 15.** Artist: Susie J. Lee, born 1972
Young Trucker, 2013
High-definition video portrait
50 × 34 × 4 in. (127 × 86.4 × 10.2 cm)
Courtesy Crystal Bridges Museum of American Art, Bentonville, Arkansas
CL.2022.3.30
GAE.2014.99



- 16.** Artist: Peter Glenn Oakley, born 1974
Sewing Machine, 2014
Marble with granite base
13 1/2 in. × 23 in. × 18 in. (34.3 × 58.4 × 45.7 cm)
sculpture: 12 in. × 17 1/4 in. × 8 in. (30.5 × 43.8 × 20.3 cm)
base: 4 × 23 × 18 in. (10.2 × 58.4 × 45.7 cm)
Courtesy Crystal Bridges Museum of American Art, Bentonville, Arkansas
CL.2022.3.31
GAE.2014.7

