



George Henry Durrie, 1820 - 1863
To Hartford—IX Miles, 1854
Oil on canvas
26 1/4 x 36 in.
Art Bridges, AB.2017.9



Sanford Robinson Gifford, 1823 - 1880
Twilight in the Adirondacks, ca. 1862
Oil on canvas
10 1/2 x 18 in.
Art Bridges, AB.2018.12



John Frederick Kensett, 1816 - 1872
Beacon Rock, Newport, 1863
Oil on canvas
18 x 30 in.
Art Bridges, AB.2018.13



Charles Caryl Coleman, 1840 - 1928
Still Life with Peach Blossoms, 1877
Oil on canvas
71 1/2 x 25 1/4 in.
Art Bridges, AB.2016.1



Edward Jean Steichen, 1879 - 1973
In Exaltation of Flowers, 1911-1914
Tempera and gold leaf on canvas
Two canvases: 120 x 100 in.
Five canvases: 120 x 55 in.
Art Bridges, AB.2016.2



Childe Hassam, 1859 - 1935
Italian Day, May 1918, 1918
Oil on canvas
36 x 26 in.
Art Bridges, AB.2018.8



Diego Rivera, Mexican, 1886 - 1957
La ofrenda, 1931
Oil on canvas
48 3/4 x 60 1/2 in.
Art Bridges, AB.2017.19



Marsden Hartley, 1877 - 1943
Give Us This Day, 1938
Oil on canvas
30 x 40 in.
Art Bridges, AB.2018.6



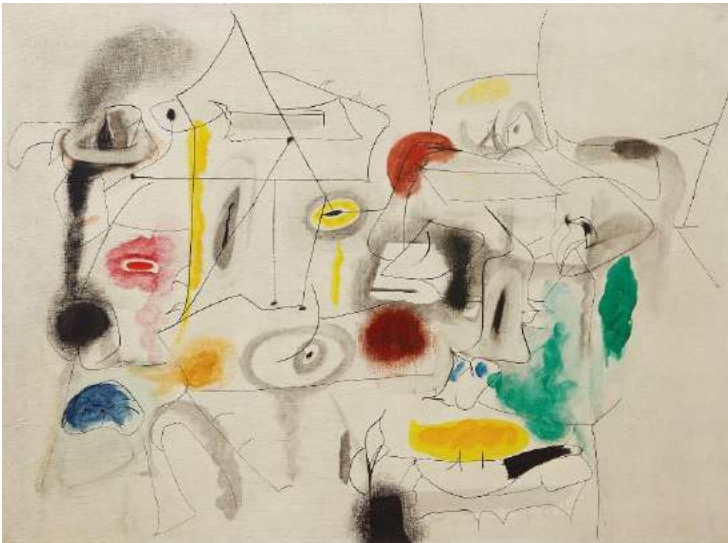
Rufino Tamayo, Mexican, 1899 - 1991
Perro aullando a la luna (Dog Howling at the Moon), 1942
Oil on canvas
44 1/4 x 33 3/4 in.
Art Bridges, AB.2018.9



George Lovett Kingsland Morris, 1905 - 1975
Munition Factory, 1943
Oil on canvas
25 x 17 in.
Art Bridges, AB.2018.4



Eldzier Cortor, 1916 - 2015
Southern Souvenir No. II, ca. 1948
Oil on board mounted on Masonite on wood strainer
21 x 50 in.
Art Bridges, AB.2017.3



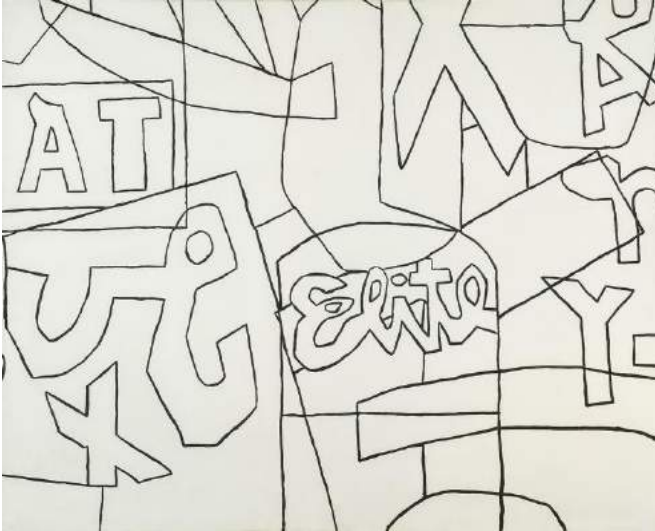
Arshile Gorky, ca. 1902 - 1948
Child's Companions, 1945
Oil and graphite on canvas
34 1/8 x 46 1/8 in.
Art Bridges, AB.2016.6



Norman Wilfred Lewis, 1909 - 1979
Untitled (Subway Station), 1945
Oil and sand on canvas
24 x 36 in.
Art Bridges, AB.2017.2



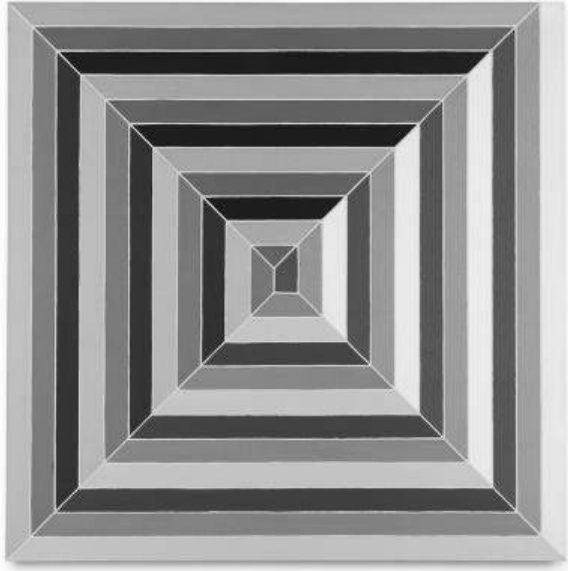
Hughie Lee-Smith, 1915 - 1999
The Walls, 1954
Oil on board
24 x 36 in.
Art Bridges, AB.2017.18



Stuart Davis, 1892 - 1964
Untitled (Black and White Variation on "Pochade"), ca. 1956-1958
Casein on canvas
45 x 56 in.
Art Bridges, AB.2018.1



Richard Diebenkorn, 1922 - 1993
Cityscape #3, 1963
Oil on canvas
47 x 50 1/8 in.
Art Bridges, AB.2018.10



Frank Stella, born 1936
Cinema de Pepsi Sketch I, 1966
Alkyd on canvas
69 x 69 in.
Art Bridges, AB.2017.6



Philip Guston, 1913 - 1980
Cigar, 1969
Oil on canvas
52 x 60 1/8 in.
Art Bridges, AB.2017.5



Joe Overstreet, born 1933

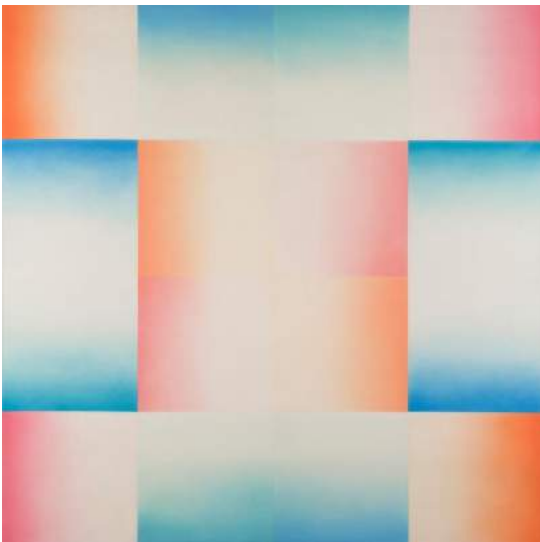
Boxes, 1970

Acrylic on constructed canvas with metal grommets and cotton rope

Canvas: 32 ½ x 39 x 35 ½ in.

Overall: 115 x 67 ½ x 48 in.

Art Bridges, AB.2018.14



Judy Chicago, born 1939

Big Blue Pink (from the "Flesh Garden" series), 1971

Sprayed acrylic lacquer on acrylic

96 x 96 in.

Art Bridges, AB.2017.10



David Clyde Driskell, born 1931
Woman with Flowers, 1972
Oil and collage on canvas
37 1/2 x 38 1/2 in.
Art Bridges, AB.2018.3



Barkley L. Hendricks, 1945 - 2017
Brenda P, 1974
Oil and acrylic on canvas
72 x 50 in.
Art Bridges, AB.2018.11



Jeff Koons, born 1955
One Ball Total Equilibrium Tank (Spalding Dr. J Silver Series), 1985
Edition of 2
Glass, steel, sodium chloride reagent, distilled water, and basketball
64 3/4 x 32 3/4 x 15 1/2 in.
Art Bridges, AB.2016.5



Glenn Ligon, born 1960
Untitled (I Am Somebody), 1990
Oil stick, gesso, and graphite on wood
80 x 30 1/4 in.
Art Bridges, AB.2016.8



Kerry James Marshall, born 1955
Lost Boys: AKA BB, 1993
Acrylic and collage on canvas
Art Bridges, AB.2017.1



Robert Gober, born 1954
Untitled, 1993-1994
Edition of 2 plus 1 artist's proof
Beeswax, wood, glassine, and felt-tip marker pen ink
9 1/2 in. x 47 3/4 in. x 40 in.
Butter: 9 1/2 x 36 1/2 x 9 3/4 in.
Art Bridges, AB.2016.4



David Hockney, British, born 1937
15 Canvas Study of the Grand Canyon, 1998
Oil on canvas in fifteen parts
68 in. x 67 in. x 2 1/2 in.
Art Bridges, AB.2017.17



Richard Prince, born 1949
Nurse Elsa, 2002
Acrylic and inkjet on canvas
93 x 56 in.
Art Bridges, AB.2016.7



Terry Adkins, 1953 – 2014
Native Son (Circus), 2006, fabricated 2015
Cymbals, armature, and additional technical components
20 x 96 in.
Art Bridges, AB.2018.5



Richard Serra, born 1938
Artaud, 2009
Oil stick on paper
78 3/4 x 78 3/4 in.
Art Bridges, AB.2017.8



Njideka Akunyili Crosby, Nigerian, born 1983
I Refuse to Be Invisible, 2010
Ink, charcoal, acrylic, and transfers on paper
117 3/4 x 82 in.
Art Bridges, AB.2017.7



Guillermo Galindo
Sonic Border, 2012-2014
8 instruments and sound composition
Duration: 4 hours, 20 minutes
Art Bridges, AB.2017.4



McArthur Binion, born 1946
DNA: Sepia: V, 2016
Oil paint stick, sepia ink, and paper on board
96 x 72 in.
Art Bridges, AB.2017.16



Mark Bradford, born 1961
Thelxiepeia, 2016
Mixed media on canvas
96 x 216 in.
Art Bridges, AB.2017.14



Jeffrey Gibson, born 1972
Migration, 2016
Acrylic and graphite on canvas
70 x 57 1/8 in.
Art Bridges, AB.2017.15



Sherrie Levine, born 1947
After Russell Lee: 1-60, 2016
Sixty giclée prints
Edition of 5 and 1 artist's proof
20 x 16 in. (each)
Art Bridges, AB.2018.2



Rachel Rose, born 1986
Lake Valley, 2016
HD video
8 minutes, 25 seconds
Art Bridges, AB.2018.7



Senga Nengudi, born 1943
A.C.Q. - Cross Eyed; *A.C.Q. - Cross Ban*; *A.C.Q. - Cross Waves*, 2016-2017
Refrigerator parts and nylon pantyhose
Left element: 27 x 20 in.
Center element: 35 x 45 in.
Right element: 43 x 30 in.
Art Bridges, AB.2017.12



Senga Nengudi, born 1943
A.C.Q. – Fandango, 2016-2017
Fan and nylon pantyhose
144 x 144 in.
Art Bridges, AB.2017.13

ADDITIONAL WORKS ON PAPER



Karl Bodmer, Swiss, 1809 – 1893
Herd of Bisons on the upper Missouri (from "Travels in the Interior of North America"), 1832-1843
Hand-colored aquatint
17 1/4 x 23 1/2 in.
Art Bridges, Gift of Carolyn and Laurence Belfer, AB.2016.9



Karl Bodmer, Swiss, 1809 – 1893

Junction of the Yellow Stone River with the Missouri (from "Travels in the Interior of North America"), 1839

Hand-colored chromolithograph

17 1/4 x 23 1/2 in.

Art Bridges, Gift of Carolyn and Laurence Belfer, AB.2016.11



Karl Bodmer, Swiss, 1809 – 1893

Niagara Falls (from "Travels in the Interior of North America"), 1832-1843

Hand-colored aquatint

17 1/4 x 23 1/2 in.

Art Bridges, Gift of Carolyn and Laurence Belfer, AB.2016.10



Karl Bodmer, Swiss, 1809 – 1893

The White Castles on the upper Missouri (from "Travels in the Interior of North America"), 1832-1843

Hand-colored aquatint

17 1/4 x 23 1/2 in.

Art Bridges, Gift of Carolyn and Laurence Belfer, AB.2016.12



Winslow Homer, 1836 - 1910

The Shell Heap, 1904

Watercolor and pencil on paper

19 5/8 x 13 7/8 in.

Art Bridges, AB.2017.11