

Art Bridges Collection

Checklist - External

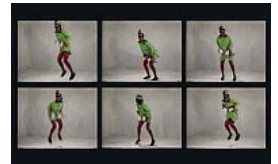
1. Artist: Charles Caryl Coleman, 1840 - 1928
Still Life with Peach Blossoms, 1877
Oil on canvas
71 1/2 × 25 1/4 in. (181.6 × 64.1 cm)
Framed: 86 × 39 1/4 in.
Art Bridges



2. Artist: Edward Jean Steichen, 1879 - 1973
In Exaltation of Flowers, 1910-1913
Tempera and gold leaf on canvas
two canvases: 120 × 100 in. (304.8 × 254 cm)
five canvases: 120 × 55 in. (304.8 × 139.7 cm)
Framed (two canvases): 126 in. × 106 in. × 4 3/8 in.
Framed (five canvases): 126 in. × 61 3/8 in. × 4 3/8 in.
Art Bridges



3. Artist: Bruce Nauman, born 1941
No, No, New Museum, 1987
Video (color, sound)
Duration: 62 minutes
Art Bridges



4. Artist: Robert Gober, born 1954
Untitled, 1993-1994
From an edition of 2 plus 1 artist's proof
Beeswax, wood, glassine, and felt-tip marker pen ink
9 1/2 in. × 47 3/4 in. × 40 in. (24.1 × 121.3 × 101.6 cm)
butter: 9 1/2 × 36 1/2 × 9 3/4 in. (24.1 × 92.7 × 24.8 cm)
Art Bridges



5. Artist: Jeff Koons, born 1955
One Ball Total Equilibrium Tank (Spalding Dr. J Silver Series), 1985
From the series "Equilibrium"
From an edition of 2
Glass, steel, sodium chloride reagent, distilled water, and basketball
64 3/4 × 32 3/4 × 15 1/2 in. (164.5 × 83.2 × 39.4 cm)
Art Bridges



6. Artist: Arshile Gorky, ca. 1902 - 1948
Child's Companions, 1945
Oil and graphite on canvas
34 1/8 × 46 1/8 in. (86.7 × 117.2 cm)
Framed: 35 3/4 × 47 3/4 × 2 1/4 in.
Art Bridges



Checklist - External

7. Artist: Richard Prince, born 1949
Nurse Elsa, 2002
Acrylic and inkjet on canvas
93 × 56 in. (236.2 × 142.2 cm)
Art Bridges



8. Artist: Glenn Ligon, born 1960
Untitled (I Am Somebody), 1990
Oil stick, gesso, and graphite on wood
80 × 30 1/4 in. (203.2 × 76.8 cm)
Art Bridges



9. Artist: Karl Bodmer, Swiss, 1809 - 1893
Herd of Bisons on the upper Missouri, 1832-1843
from "Travels in the Interior of North America" (Paris)
Hand-colored aquatint
Art Bridges, Gift of Carolyn and Laurence Belfer



10. Artist: Karl Bodmer, Swiss, 1809 - 1893
Niagara Falls, 1832-1843
from "Travels in the Interior of North America" (Paris)
Hand-colored aquatint
Art Bridges, Gift of Carolyn and Laurence Belfer



11. Artist: Karl Bodmer, Swiss, 1809 - 1893
Junction of the Yellow Stone River with the Missouri, 1839
from "Travels in the Interior of North America" (Paris)
Hand-colored chromolithograph
Art Bridges, Gift of Carolyn and Laurence Belfer



12. Artist: Karl Bodmer, Swiss, 1809 - 1893
The White Castles on the upper Missouri, 1832-1843
from "Travels in the Interior of North America" (Paris)
Hand-colored aquatint
Art Bridges, Gift of Carolyn and Laurence Belfer



13. Artist: Kerry James Marshall, born 1955
Lost Boys: AKA BB, 1993
Acrylic and collage on canvas
Framed: 28 in. × 30 in. × 1 1/2 in.
Art Bridges



Checklist - External

14. Artist: Norman Wilfred Lewis, 1909 - 1979
Untitled (Subway Station), 1945
Oil and sand on canvas
24 × 36 in. (61 × 91.4 cm)
Art Bridges



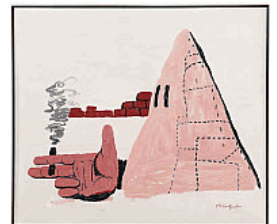
15. Artist: Eldzier Cortor, 1916 - 2015
Southern Souvenir No. II, ca. 1948
Oil on board mounted on Masonite on wood strainer
21 × 50 in. (53.3 × 127 cm)
Framed: 35 1/2 × 64 1/2 × 2 1/4 in.
Art Bridges



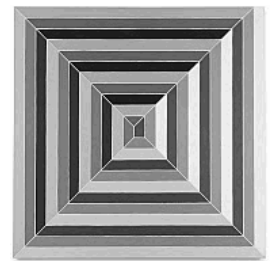
16. Artist: Guillermo Galindo
Sonic Border, 2012-2014
Installation: 8 instruments and 4:20 sound composition
4 hours, 20 minutes
Art Bridges



17. Artist: Philip Guston, 1913 - 1980
Cigar, 1969
Oil on canvas
52 × 60 1/8 in. (132.1 × 152.7 cm)
Art Bridges



18. Artist: Frank Stella, born 1936
Cinema de Pepsi Sketch I, 1966
Alkyd on canvas
69 × 69 in. (175.3 × 175.3 cm)
Art Bridges



19. Artist: Njideka Akunyili Crosby, Nigerian, born 1983
I Refuse to Be Invisible, 2010
Ink, charcoal, acrylic, and transfers on paper
117 3/4 × 82 in. (299.1 × 208.3 cm)
Art Bridges



Checklist - External

- 20.** Artist: Richard Serra, born 1938
Artaud, 2009
Oil stick on paper
78 3/4 × 78 3/4 in. (200 × 200 cm)
Art Bridges



- 21.** Artist: George Henry Durrie, 1820 - 1863
To Hartford—IX Miles, 1854
Oil on canvas
26 1/4 × 36 in. (66.7 × 91.4 cm)
Framed: 38 in. × 48 1/4 in. × 4 in.
Art Bridges



- 22.** Artist: Judy Chicago
Big Blue Pink, 1971
from the "Flesh Garden" series
Sprayed acrylic lacquer on acrylic
96 × 96 in. (243.8 × 243.8 cm)
Art Bridges



- 23.** Artist: Winslow Homer, 1836 - 1910
The Shell Heap, 1904
Watercolor and pencil on paper
19 5/8 × 13 7/8 in. (49.8 × 35.2 cm)
Licensed by VAGA, New York, NY Art Bridges



- 24.** Artist: Senga Nengudi, born 1943
A.C.Q. - Cross Eyed; A.C.Q. - Cross Ban; A.C.Q. - Cross Waves, 2016-2017
Refrigerator parts and nylon pantyhose
Left element: 27 × 20 in. (68.6 × 50.8 cm)
Center element: 35 × 45 in. (88.9 × 114.3 cm)
Right element: 43 × 30 in. (109.2 × 76.2 cm)
Art Bridges



- 25.** Artist: Senga Nengudi, born 1943
A.C.Q. - Fandango, 2016-2017
Fan and nylon pantyhose
144 × 144 in. (365.8 × 365.8 cm)
Art Bridges



Checklist - External

- 26.** Artist: Mark Bradford, born 1961
Thelxiepeia, 2016
Mixed media on canvas
96 in. × 18ft. (243.8 × 548.6 cm)
Art Bridges
-



- 27.** Artist: Jeffrey Gibson, born 1972
Migration, 2016
Acrylic and graphite on canvas
70 × 57 1/8 in. (177.8 × 145.1 cm)
Art Bridges
-



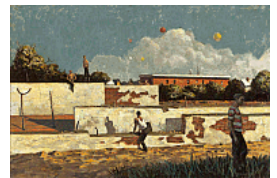
- 28.** Artist: McArthur Binion, born 1946
DNA: Sepia: V, 2016
Oil paint stick, sepia ink, and paper on board
96 × 72 in. (243.8 × 182.9 cm)
Art Bridges
-



- 29.** Artist: David Hockney, British, born 1937
15 Canvas Study of the Grand Canyon, 1998
Oil on canvas in fifteen parts
68 in. × 67 in. × 2 1/2 in. (172.7 × 170.2 × 6.4 cm)
Art Bridges
-



- 30.** Artist: Hughie Lee-Smith, 1915 - 1999
The Walls, 1954
Oil on board
24 × 36 in. (61 × 91.4 cm)
Framed: 33 5/8 in. × 45 3/4 in. × 2 in.
Art Bridges
-



- 31.** Artist: Diego Rivera, Mexican, 1886 - 1957
La ofrenda, 1931
Oil on canvas
48 3/4 × 60 1/2 in. (123.8 × 153.7 cm)
Art Bridges
-

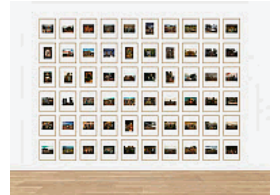


Checklist - External

- 32.** Artist: Stuart Davis, 1892 - 1964
Untitled (Black and White Variation on "Pochade"), ca. 1956-1958
Casein on canvas
45 × 56 in. (114.3 × 142.2 cm)
Art Bridges



- 33.** Artist: Sherrie Levine, born 1947
After Russell Lee: 1-60, 2016
From an edition of 5 + 1 artist's proof
Sixty giclée prints
Each print: 20 × 16 in. (50.8 × 40.6 cm)
Framed: 21 1/2 × 17 1/2 × 1 1/4 in.
Art Bridges



- 34.** Artist: David Clyde Driskell, born 1931
Woman with Flowers, 1972
Oil and collage on canvas
37 1/2 × 38 1/2 in. (95.3 × 97.8 cm)
Framed: 30 5/8 × 22 1/2 × 1 3/4 in.
Art Bridges



- 35.** Artist: George Lovett Kingsland Morris, 1905 - 1975
Munition Factory, 1943
Oil on canvas
25 × 17 in. (63.5 × 43.2 cm)
Framed: 30 5/8 × 22 1/2 × 1 1/2 in.
Art Bridges



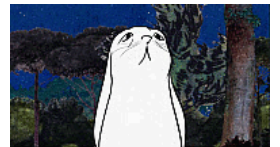
- 36.** Artist: Terry Adkins, 1953 - 2014
Native Son (Circus), 2006/2015
Cymbals, armature, and additional technical components
20 × 96 in. (50.8 × 243.8 cm)
Art Bridges



- 37.** Artist: Marsden Hartley, 1877 - 1943
Give Us This Day, 1938
Oil on canvas
30 × 40 in. (76.2 × 101.6 cm)
Art Bridges



- 38.** Artist: Rachel Rose, born 1986
Lake Valley, 2016
HD video
8 minutes, 25 seconds
Art Bridges

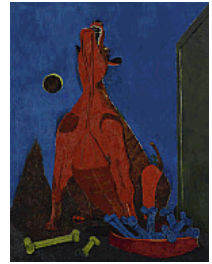


Checklist - External

- 39.** Artist: Childe Hassam, 1859 - 1935
Italian Day, May 1918, 1918
Oil on canvas
36 × 26 in. (91.4 × 66 cm)
Art Bridges



- 40.** Artist: Rufino Tamayo, Mexican, 1899 - 1991
Perro aullando a la luna (Dog Howling at the Moon), 1942
Oil on canvas
44 1/4 × 33 3/4 in. (112.4 × 85.7 cm)
Art Bridges



- 41.** Artist: Barkley L. Hendricks, 1945 - 2017
Brenda P, 1974
Oil and acrylic on canvas
72 × 50 in. (182.9 × 127 cm)
Art Bridges



- 42.** Artist: Richard Diebenkorn, 1922 - 1993
Cityscape #3, 1963
Oil on canvas
47 × 50 1/8 in. (119.4 × 127.3 cm)
Art Bridges

