

Art Bridges Collection

1. Artist: Charles Caryl Coleman, 1840 - 1928
Still Life with Peach Blossoms, 1877
Oil on canvas
71 1/2 × 25 1/4 in. (181.6 × 64.1 cm)
Framed: 86 × 39 1/4 in.
Art Bridges
AB.2016.1



2. Artist: Edward Jean Steichen, 1879 - 1973
In Exaltation of Flowers, 1910-1913
Tempera and gold leaf on canvas
two canvases: 124 1/2 in. × 100 in. × 4 in. (316.2 × 254 × 10.2 cm)
five canvases: 120 × 55 in. (304.8 × 139.7 cm)
Art Bridges
AB.2016.2



3. Artist: Edward Jean Steichen, 1879 - 1973
In Exaltation of Flowers: Gloxinia, Delphinium, ca. 1910-1913
Tempera and gold leaf on canvas
120 × 55 in. (304.8 × 139.7 cm)
Art Bridges
AB.2016.2.1



4. Artist: Edward Jean Steichen, 1879 - 1973
In Exaltation of Flowers: Clivia, Fuchsia, Helenium, Henryi, ca. 1910-1913
Tempera and gold leaf on canvas
120 × 96 in. (304.8 × 243.8 cm)
Art Bridges
AB.2016.2.2



5. Artist: Edward Jean Steichen, 1879 - 1973
Depicted: Florence Homolka, 1911 - 1962
In Exaltation of Flowers: Coleus, The Florence Meyer Poppy, ca. 1910-1913
Tempera and gold leaf on canvas
120 × 55 in. (304.8 × 139.7 cm)
Art Bridges
AB.2016.2.3



Art Bridges List

6. Artist: Edward Jean Steichen, 1879 - 1973
In Exaltation of Flowers: Petunia, Begonia Rex, The Freer Bronze, 1913
Tempera and gold leaf on canvas
120 × 55 in. (304.8 × 139.7 cm)
Art Bridges
AB.2016.2.4



7. Artist: Edward Jean Steichen, 1879 - 1973
Depicted: Katherine Nash Rhoades, 1895 - 1965
In Exaltation of Flowers: Rose, Geranium, 1910
Tempera and gold leaf on canvas
120 × 55 in. (304.8 × 139.7 cm)
Art Bridges
AB.2016.2.5



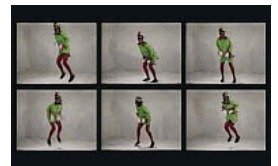
8. Artist: Edward Jean Steichen, 1879 - 1973
Depicted: Marion H. Beckett, 1886 - 1949
In Exaltation of Flowers: Petunia, Caladium, Budaya, ca. 1910-1913
Tempera and gold leaf on canvas
120 × 96 in. (304.8 × 243.8 cm)
Art Bridges
AB.2016.2.6



9. Artist: Edward Jean Steichen, 1879 - 1973
In Exaltation of Flowers: Golden Banded Lily, Violets, ca. 1910-1913
Tempera and gold leaf on canvas
120 × 55 in. (304.8 × 139.7 cm)
Art Bridges
AB.2016.2.7



10. Artist: Bruce Nauman, born 1941
No, No, New Museum, 1987
Video (color, sound)
Duration: 62 minutes
Art Bridges
AB.2016.3



Art Bridges List

- 11.** Artist: Robert Gober, born 1954
Untitled, 1993-1994
From an edition of 2 plus 1 artist's proof
Beeswax, wood, glassine, and felt-tip marker pen ink
9 1/2 in. × 47 3/4 in. × 40 in. (24.1 × 121.3 × 101.6 cm)
butter: 9 1/2 × 36 1/2 × 9 3/4 in. (24.1 × 92.7 × 24.8 cm)
Art Bridges
AB.2016.4



- 12.** Artist: Jeff Koons, born 1955
One Ball Total Equilibrium Tank (Spalding Dr. J Silver Series), 1985
From the series "Equilibrium"
From an edition of 2
Glass, steel, sodium chloride reagent, distilled water, and basketball
64 3/4 × 32 3/4 × 15 1/2 in. (164.5 × 83.2 × 39.4 cm)
Art Bridges
AB.2016.5



- 13.** Artist: Arshile Gorky, ca. 1902 - 1948
Child's Companions, 1945
Oil and graphite on canvas
34 1/8 × 46 1/8 in. (86.7 × 117.2 cm)
Framed: 35 3/4 × 47 3/4 × 2 1/4 in.
Art Bridges
AB.2016.6



- 14.** Artist: Richard Prince, born 1949
Nurse Elsa, 2002
Acrylic and inkjet on canvas
93 × 56 in. (236.2 × 142.2 cm)
Art Bridges
AB.2016.7



- 15.** Artist: Glenn Ligon, born 1960
Untitled (I Am Somebody), 1990
Oil stick, gesso, and graphite on wood
80 × 30 1/4 in. (203.2 × 76.8 cm)
Art Bridges
AB.2016.8



Art Bridges List

- 16.** Artist: Karl Bodmer, Swiss, 1809 - 1893
Herd of Bisons on the upper Missouri, 1832-1843
from "Travels in the Interior of North America" (Paris)
Hand-colored aquatint
Art Bridges, Gift of Carolyn and Laurence Belfer
AB.2016.9



- 17.** Artist: Karl Bodmer, Swiss, 1809 - 1893
Niagara Falls, 1832-1843
from "Travels in the Interior of North America" (Paris)
Hand-colored aquatint
Art Bridges, Gift of Carolyn and Laurence Belfer
AB.2016.10



- 18.** Artist: Karl Bodmer, Swiss, 1809 - 1893
Junction of the Yellow Stone River with the Missouri, 1839
from "Travels in the Interior of North America" (Paris)
Hand-colored chromolithograph
Art Bridges, Gift of Carolyn and Laurence Belfer
AB.2016.11



- 19.** Artist: Karl Bodmer, Swiss, 1809 - 1893
The White Castles on the upper Missouri, 1832-1843
from "Travels in the Interior of North America" (Paris)
Hand-colored aquatint
Art Bridges, Gift of Carolyn and Laurence Belfer
AB.2016.12



- 20.** Artist: Kerry James Marshall, born 1955
Lost Boys: AKA BB, 1993
Acrylic and collage on canvas
Framed: 28 in. x 30 in. x 1 1/2 in.
Art Bridges
AB.2017.1



- 21.** Artist: Norman Wilfred Lewis, 1909 - 1979
Untitled (Subway Station), 1945
Oil and sand on canvas
24 x 36 in. (61 x 91.4 cm)
Art Bridges
AB.2017.2



Art Bridges List

- 22.** Artist: Eldzier Cortor, 1916 - 2015
Southern Souvenir No. II, ca. 1948
Oil on board mounted on Masonite on wood strainer
21 × 50 in. (53.3 × 127 cm)
Framed: 35 1/2 × 64 1/2 × 2 1/4 in.
Art Bridges
AB.2017.3

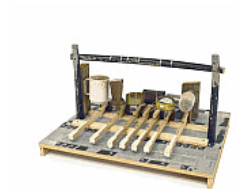


- 23.** Artist: Guillermo Galindo
Sonic Borders, 2012-2014
Installation: 8 instruments and 4:20 sound composition
4 hours, 20 minutes
Art Bridges
AB.2017.4

- 24.** Artist: Guillermo Galindo
Effigy, 2014
Efigie
Immigrants' clothing, wood axis, and strings
66 × 22 × 48 in. (167.6 × 55.9 × 121.9 cm)
Art Bridges
AB.2017.4.1



- 25.** Artist: Guillermo Galindo
Teclata, 2014
Cans, plastic cup, bottles, piano keys, string, wood, cardboard ammunition boxes, and fabricated mechanism
26 × 18 × 30 in. (66 × 45.7 × 76.2 cm)
Art Bridges
AB.2017.4.2



- 26.** Artist: Guillermo Galindo
Huesocordio, 2012
Vertebrae bridges, wood box resonator, nylon strings, and pick-up amplification
8 3/4 in. × 67 in. × 6 in. (22.2 × 170.2 × 15.2 cm)
Art Bridges
AB.2017.4.3



- 27.** Artist: Guillermo Galindo
Wall Vibraphone, 2014
Tortillafono
Cut and soldered iron, and metal strings
16 in. × 24 in. × 5 5/8 in. (40.6 × 61 × 14.2 cm)
Art Bridges
AB.2017.4.4



Art Bridges List

- 28.** Artist: Guillermo Galindo
Soundscape, 2014
Paisaje Sonoro
Hollow wood, rusty nails, clothing, and Bible
mountain sculpture: 27 × 51 × 12 in. (68.6 × 129.5 × 30.5 cm)
table: 20 × 30 × 40 in. (50.8 × 76.2 × 101.6 cm)
Art Bridges
AB.2017.4.5



- 29.** Artist: Guillermo Galindo
Shell Piñata, 2014
Piñata de casquillos
Sheet metal and shotgun shell casings
17 × 30 × 30 in. (43.2 × 76.2 × 76.2 cm)
Art Bridges
AB.2017.4.6



- 30.** Artist: Guillermo Galindo
Agitanques, 2013
Plastic jugs filled with gravel
Art Bridges
AB.2017.4.7



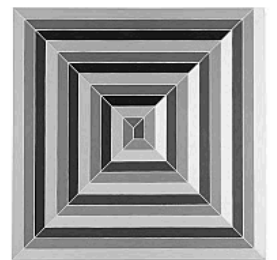
- 31.** Artist: Guillermo Galindo
Cokeflute, Pediaflute, Bottle Flute, 2012-2014
Glass Coca-Cola bottle, plastic Pediayte bottle, and green glass bottle
Art Bridges
AB.2017.4.8



- 32.** Artist: Philip Guston, 1913 - 1980
Cigar, 1969
Oil on canvas
52 × 60 1/8 in. (132.1 × 152.7 cm)
Art Bridges
AB.2017.5



- 33.** Artist: Frank Stella, born 1936
Cinema de Pepsi Sketch I, 1966
Alkyd on canvas
69 × 69 in. (175.3 × 175.3 cm)
Art Bridges
AB.2017.6



Art Bridges List

- 34.** Artist: Njideka Akunyili Crosby, Nigerian, born 1983

I Refuse to Be Invisible, 2010

Ink, charcoal, acrylic, and transfers on paper

117 3/4 × 82 in. (299.1 × 208.3 cm)

Art Bridges

AB.2017.7



- 35.** Artist: Richard Serra, born 1938

Artaud, 2009

Oil stick on paper

78 3/4 × 78 3/4 in. (200 × 200 cm)

Art Bridges

AB.2017.8



- 36.** Artist: George Henry Durrie, 1820 - 1863

To Hartford—IX Miles, 1854

Oil on canvas

26 1/4 × 36 in. (66.7 × 91.4 cm)

Framed: 38 in. × 48 1/4 in. × 4 in.

Art Bridges

AB.2017.9



- 37.** Artist: Judy Chicago

Big Blue Pink, 1971

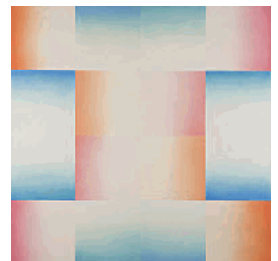
from the "Flesh Garden" series

Sprayed acrylic lacquer on acrylic

96 × 96 in. (243.8 × 243.8 cm)

Art Bridges

AB.2017.10



- 38.** Artist: Winslow Homer, 1836 - 1910

The Shell Heap, 1904

Watercolor and pencil on paper

19 5/8 × 13 7/8 in. (49.8 × 35.2 cm)

Art Bridges

AB.2017.11

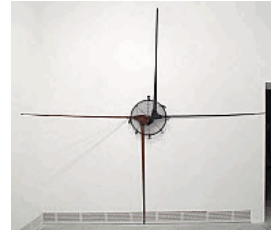


Art Bridges List

- 39.** Artist: Senga Nengudi, born 1943
A.C.Q. - Cross Eyed; A.C.Q. - Cross Ban; A.C.Q. - Cross Waves, 2016-2017
Refrigerator parts and nylon pantyhose
Left element: 27 × 20 in. (68.6 × 50.8 cm)
Center element: 35 × 45 in. (88.9 × 114.3 cm)
Right element: 43 × 30 in. (109.2 × 76.2 cm)
Art Bridges
AB.2017.12



- 40.** Artist: Senga Nengudi, born 1943
A.C.Q. - Fandango, 2016-2017
Fan and nylon pantyhose
144 × 144 in. (365.8 × 365.8 cm)
Art Bridges
AB.2017.13



- 41.** Artist: Mark Bradford, born 1961
Thelxiepeia, 2016
Mixed media on canvas
96 in. × 18ft. (243.8 × 548.6 cm)
Art Bridges
AB.2017.14



- 42.** Artist: Jeffrey Gibson, born 1972
Migration, 2016
Acrylic and graphite on canvas
70 × 57 1/8 in. (177.8 × 145.1 cm)
Art Bridges
AB.2017.15



- 43.** Artist: McArthur Binion, born 1946
DNA: Sepia: V, 2016
Oil paint stick, sepia ink, and paper on board
96 × 72 in. (243.8 × 182.9 cm)
Art Bridges
AB.2017.16



- 44.** Artist: David Hockney, British, born 1937
15 Canvas Study of the Grand Canyon, 1998
Oil on canvas in fifteen parts
68 in. × 67 in. × 2 1/2 in. (172.7 × 170.2 × 6.4 cm)
Art Bridges
AB.2017.17



Art Bridges List

- 45.** Artist: Hughie Lee-Smith, 1915 - 1999
The Walls, 1954
Oil on board
24 × 36 in. (61 × 91.4 cm)
Framed: 33 5/8 in. × 45 3/4 in. × 2 in.
Art Bridges
AB.2017.18



- 46.** Artist: Diego Rivera, Mexican, 1886 - 1957
La ofrenda, 1931
Oil on canvas
48 3/4 × 60 1/2 in. (123.8 × 153.7 cm)
Art Bridges
AB.2017.19



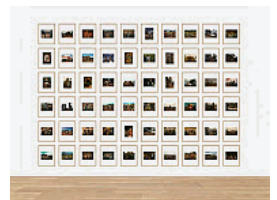
- 47.** Artist: Stuart Davis, 1892 - 1964
Untitled (Black and White Variation on "Pochade"), ca. 1956-1958
Casein on canvas
45 × 56 in. (114.3 × 142.2 cm)
Art Bridges
AB.2018.1



- 48.** Artist: David Clyde Driskell, born 1931
Woman with Flowers, 1972
Oil and collage on canvas
37 1/2 × 38 1/2 in. (95.3 × 97.8 cm)
Art Bridges
AB.2018.xx1



- 49.** Artist: Sherrie Levine
After Russell Lee: 1-60, 2016
From an edition of 5 + 1 artist's proof
Giclee print
Each print: 20 × 16 in. (50.8 × 40.6 cm)
Framed: 21 1/2 × 17 1/2 × 1 1/4 in.
AB.2018.xx2



- 50.** Artist: Rachel Rose
Lake Valley, 2016
HD video
8 minutes, 25 seconds (8 minutes, 25 seconds)
Art Bridges
AB.2018.xx4

